



OVERTURE CENTER
FOR THE ARTS



REPORT TO
THE COMMUNITY
2020/21



A YEAR LIKE NO OTHER

One year ago, we surveyed the environment and accepted that Overture's closure due to the COVID-19 worldwide pandemic could last for the full fiscal year 2020/21. With no earned revenue likely for an entire year, the Executive Leadership Team built an 18-month financial forecast and an operational plan to keep our mission active and maintain our beautiful building, while stewarding our resources wisely.

It was a year filled with emotion and challenges as we made difficult decisions to ensure Overture would endure, knowing these decisions would impact our employees, patrons and stakeholders. Reducing staffing and expenses by over 60% was a painful but necessary step.

However, 2020/21 was also a year of generosity, creativity and hope. This report shares the issues we faced and how Overture was able to respond, thanks to the dedication of our employees, the generosity of our community and the strengthened relationships that brought about new collaborations and solutions to shared obstacles.

Thanks to the efforts of many people, Overture has been able to continue to serve our mission to support and elevate our community's creative culture, economy and quality of life through the arts while our building was closed. We are grateful for everyone who believes the arts are a necessity and join us in our mission.

A new strategic plan will guide Overture's path to safely reopen our facility and bring exceptional arts experiences to hundreds of thousands of people. Because of you, Overture will be built to last.

Sincerely,

Overture Center for the Arts' Executive Leadership Team

Emily Gruenewald
*Chief Development and
Communications Officer*

Tim Sauers
Chief Artistic Experiences Officer

Matt Beckler
Chief Information Officer

Jacque Goetz
Chief Operations Officer

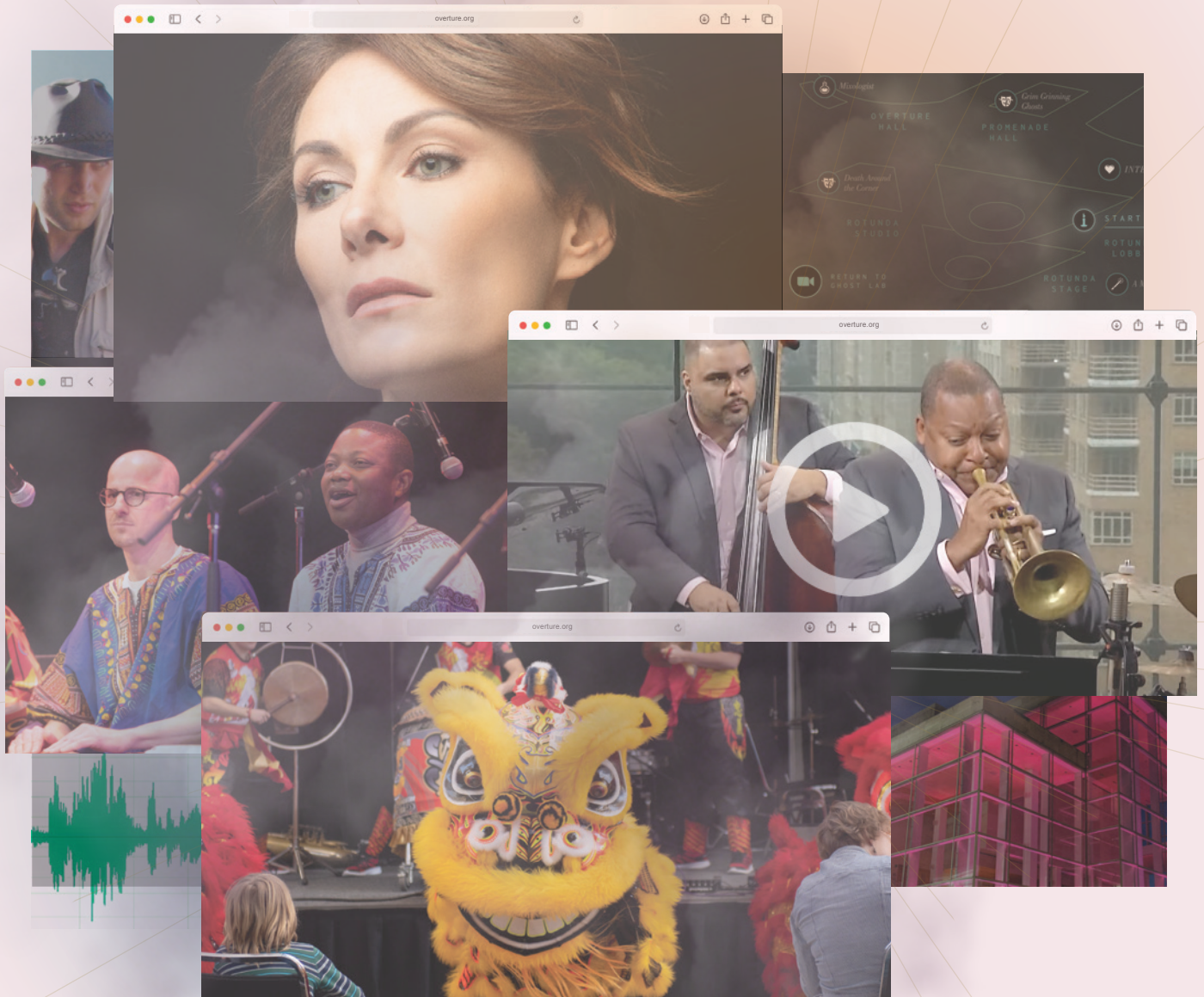
Chris Vogel
*Chief Financial Officer/
Chief Business Officer*

Ed Holmes, PhD,
*Chief Equity and Innovation
Officer*



OVERTURE CENTER
EXECUTIVE LEADERSHIP TEAM

A COMMUNITY CONNECTED





Broadway's *Wicked* set sat frozen in time on Overture Hall's dark stage through first quarter of the 2020/21 fiscal year, a quiet reminder of the losses that continued to afflict our organization. Canceled shows. Refunded tickets. No earned revenue. Laid-off and furloughed staff. A building in need of repairs.

Action was needed to sustain Overture Center during our closure and to support a strong future for the arts in our community. On Sept. 1, 2020, we launched an Intermission fundraising campaign with a goal to raise \$1.5 million by Dec. 31, 2020. We are grateful to the Madison-area community for the outpouring of support and generosity during the campaign, which received 2,200 donations and raised \$2.2 million. Total campaign revenue included individual, corporate and foundation gifts, state grants and a donation by the W. Jerome Frautschi Foundation that matched all donations during the last month of the campaign.

To bring attention to the plight of the arts and live entertainment industry, we worked with other arts organizations statewide to advocate for state and federal support for the arts industry, which resulted in two state grant programs for the industry. Collaboration with our resident arts companies and peer arts centers forged new partnerships to support the arts ecosystem, learn from each other and develop strategic plans to safely reopen our industry by adopting shared policies and procedures.

At the same time, a dedicated team of employees continued to foster our mission by providing artistic experiences to our community virtually, staying connected with supporters and providing entertainment to homebound individuals and families.

Through our 2020/21 programming efforts, we sold 2,689 virtual tickets and received 343,430 virtual engagements. Our education and engagement team coordinated another 14,500 arts experiences, and our resident companies sold more than 13,450 tickets, resulting in more than 374,000 experiences and engagements in a year of all-virtual programming.



NOTEWORTHY



DOWNTOWN STREET ART AND MURAL PROJECT

The boards shuttering Overture's windows and doors became a canvas for artistic expression by artists of color affected by racial violence and injustice. Artists in the mural project created 70 commissioned murals—17 on Overture Center—conveying urgent demands for change and inspiring community dialogue.



CHRISTOPHER JACKSON: LIVE FROM THE WEST SIDE

Our first show of the 2020/21 season was a virtual benefit performance by Christopher Jackson, which streamed live from New York on Saturday, Aug. 15, and sold over 300 tickets.



OVERTURE FORUMS

In an effort to address questions related to our "intermission" and what the future of the arts in our community may look like, Overture hosted a series of virtual forums, covering a variety of topics with updates from Overture's executive team and community and industry leaders. Nearly a thousand viewers joined the forums, and the YouTube videos were watched 1,775 times.



LIGHT IT RED FOR LIVE EVENTS INDUSTRY

Overture Center lit up in red on Tuesday, Sept. 1 to raise public awareness that the Live Events Industry was on “red alert” for its very survival and to create congressional pressure to provide relief. More than 1,500 venues across the nation participated in the event.



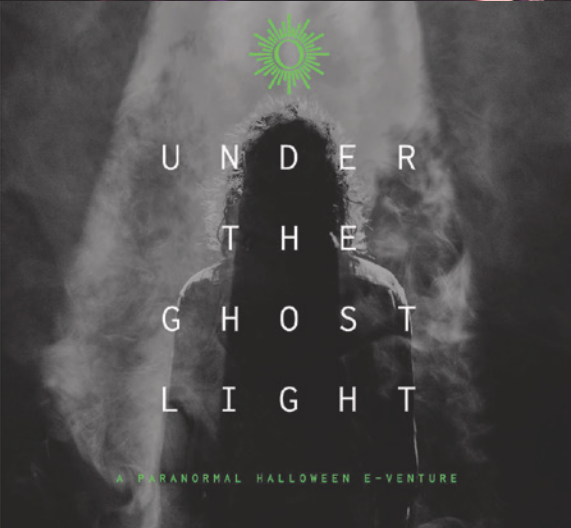
VOICE YOUR HEART

We invited the community to share their songs, poetry, reflections, photos, dances and drawings with us to show what they were feeling during the challenging times of social unrest and COVID-19 pandemic. Sixty visual art, music and dance submissions were received and displayed in a virtual gallery. Select pieces were also exhibited outside the building.



WOMEN OF BROADWAY

Overture was one of a select group of nonprofit arts organizations participating in a three-part virtual concert series, *Live from the West Side: Women of Broadway*, featuring two-time Tony Award winner Patti LuPone, Tony Award winner Laura Benanti and critically acclaimed actress and singer Vanessa Williams. Nearly 500 tickets were sold.



UNDER THE GHOST LIGHT

While our theaters were closed, our ghost light remained as a reminder that in the theater the lights never truly go out. During our interactive virtual event on Thursday, Oct. 29, guests explored Overture by ghost light. Special guests shared their experiences along with whispered legends, lore and history of some of our favorite spaces at Overture. More than 390 tickets were sold, and the event earned 453 views.



NOTEWORTHY



JAZZ AT LINCOLN CENTER

Overture Center delivered a special “get out and vote” message in an uplifting virtual show: *Jazz at Lincoln Center Orchestra Septet with Wynton Marsalis: “The Sounds of Democracy”* on Friday, Oct. 30, with 300-plus guests attending virtually.



VIRTUAL FIELD TRIPS

From November to April, Overture Center provided online arts education to multiple elementary and middle schools. Participating schools chose from four themes: Amplify through Art: Your Voice Matters; Art Discovery: Explore a Variety of Art Forms; STEAM: Tech + the Arts, and Meet the Artists: Behind the Scenes + Art Careers.



TAKE THE STAGE 2020

Overture’s top donors were treated to a virtual Take the Stage: Intermission Edition on Wednesday, Dec. 2, with interviews and performances by singer-songwriter Angela Puerto and theatrical performer Tatyana Lubov as well as a studio tour with gallery artists Barbara Landes and Paul Sullivan.

NOMINATE A STAR CONTEST



'NOMINATE A STAR' CONTEST

Overture Center in collaboration with Broadway Across America ran a social media campaign inviting nominations of local stars who went above and beyond for the community. Five winners were selected based on their contribution to the community and the compelling nature of their story.

The following winners received four tickets to an upcoming Broadway show: Tony Hornung, Molly Jasper, Gary Reynolds and Stacy Schimpf, all of Madison, and Clare Vanden Hogen, Appleton.

NATIONAL GEOGRAPHIC LIVE!

Viewers enjoyed three thought-provoking virtual National Geographic Live productions: *Life on Other Worlds* with Kobie Boykins & Kevin Hand on Jan. 19–20, *Reimagining Dinosaurs* with Nizar Ibrahim & Sebastián Rozadilla on Feb. 23–24 and *Mysterious Seas* with Diva Amon & David Gruber on March 30–31; 654 tickets were issued for these shows.

BROADWAY SEASON ANNOUNCEMENT

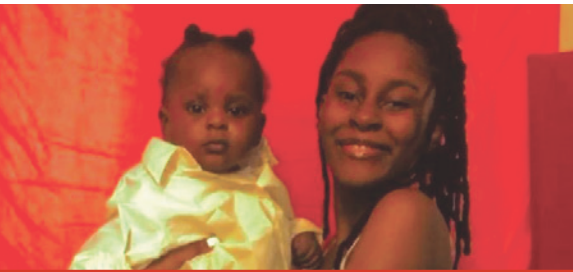
More than 700 viewers joined us for our most-anticipated announcement of the year—our Broadway season announcement—on Thursday, Jan. 28. Most 2020/21 shows were rescheduled to the 2021/22 season, and *Hairspray* was added. In addition, we were thrilled to announce the return of *Hamilton* as the final show of the 2021/22 season.

INTERNATIONAL FESTIVAL

International Festival took place on Saturday, Feb. 27, serving as an opportunity to celebrate the rich cultural heritage within our community. At the free virtual event, visitors explored cultures around the world by clicking links on an interactive map to view pre-recorded performances, cooking demonstrations, cultural spotlights and an online market. Over 100 schools participated with more than 2,700 students as well as nearly 1,000 other viewers. Total videos watched exceeded 6,200.



NOTEWORTHY



THE LULLABY PROJECT

This year, Overture Center brought The Lullaby Project to Madison Metropolitan School District’s School Age Parent Program (SAPAR). Together, trained teaching artists Angela Puerta, Laura Lang and Dana Perry worked one-on-one with students and their instructors to use the creative process of songwriting to help new and expectant parents express their hopes and dreams for the future through music. A livestreamed concert was held on Saturday, May 8, in celebration of Mother’s Day, which was viewed by nearly 900 people.

OVERTURE GALLERIES: CALL FOR COVID ART

On May 3, Overture Center extended a call for artist applications for its fall 2021 exhibit: “Everything COVID” which received over 150 applicants. This exhibition explores what people have experienced during the COVID pandemic and opened in September 2021 in our Playhouse Gallery.

DEAR EVAN HANSEN SCHOLARSHIP CONTEST

In May, Overture Center for the Arts, Fox Cities Performing Arts Center and Marcus Performing Arts Center, in partnership with Rogers Behavioral Health, announced that five Wisconsin students were awarded with a \$1,000 scholarship as part of the *Dear Evan Hansen* “You Will Be Found” college essay writing challenge.

The students awarded scholarships were Anya Kelley, Appleton West; Clara McElfresh, Shorewood; Meghan Morgan, Pulaski; Maxwell Roquette, Middleton; and Isidore Simon, Xavier.



 EQUITY & INNOVATION UPDATE



  
INTERMISSION
AT OVERTURE CENTER
 WITH YOUR HELP,
WE'LL BE RIGHT BACK 

OVERTURE PRESENTS ANNOUNCEMENT

In a virtual presentation on Monday, May 10, we announced the lineup of Overture Presents performances for October 2021 through February 2022 along with 2021/22 subscription series: Broadway, *National Geographic Live* and Cabaret. Nearly 200 people viewed the announcement.

JERRY AWARDS PROGRAM

Overture Center's Jerry Awards program looked a bit different this year but the show went on. This year's program invited students from around the state to participate in workshops focused on actor and singer performance technique. The 2021 Jerry Awards show featured 20 of those students performing in Promenade Hall.

Alex Daspit and Laëtitia Hollard, both graduates of McFarland High School, were selected to represent Overture Center at the National High School Musical Theatre Awards® (NHSMTA®). The Jimmy Awards® on July 15. The Jerry Awards virtual show garnered 962 views on YouTube and was viewed by 1,700 households with a reach of 3,300 people via Facebook.

EQUITY AND INNOVATION WORKSHOPS

Staff and board members showed their commitment to diversity, equity and inclusion by participating in several educational workshops with guest speakers Dr. Kenneth Hardy, Peng Her and Judge Everett Mitchell.

INTERMISSION BLOG

Over the course of the year, more than 20 stories were posted on the Intermission Blog. Artists, audience members and supporters shared why they miss Overture Center and why they support the arts. View these stories at overture.org/blog.

A RETURN TO
THE STAGE





While Overture remained closed throughout the fiscal year, the center opened to the public for three special occasions: an American Red Cross Blood Drive on April 27, the Jerry Awards Show on May 22 and a private wedding on June 26.

Broadway at Overture subscriptions went on sale on June 1. We were pleased that 97 percent of subscribers carried over their subscriptions to the 2021/22 season, and over 1,000 more Broadway subscriptions were sold within the first month of going on sale, exceeding our goal of 7,500 subscriptions. Overture Presents subscriptions went on sale May 10, and top ticket sales as of June 30, the last day of the fiscal year, went to *Stars of the Sixties*, *Mannheim Steamroller Christmas by Chip Davis* and *Chris Mann: Phantom Voices*.

With the help of funds from the Intermission Campaign and state and federal grants, we were able to make investments in our building, including repairing the North Henry Street entrance and stairs, refurbishing Overture Hall Lobby floors and repairing leaking roofs. In addition, for the health and safety of all who enter Overture, we installed touchless security at entrances, touchless credit card readers at the ticket office and touchless scanning devices, as well as touchless sinks and toilets in the bathrooms.

As summer approached, we rehired some of our laid-off staff and increased hours for others as we began to ramp up and move toward our reopening.

With the announcement of an Overture Foundation Board-approved shared executive leadership team and a "Build to Last" strategic plan in the works, Overture Center is positioned for a successful reopening and comeback in 2021/22.

As a new year begins, we are filled with hope, thanks to the many people and organizations who have supported us in our greatest time of need. We are moving forward, ready to welcome back crowds, reunite with friends, discover inspiration and joy in live performances and thank our supporters in person.

We are ready to take on another year, together, supporting and elevating our community's creative culture, economy and quality of life through the arts.

2020/21 FINANCIALS

STATEMENT OF FINANCIAL POSITION

As of June 30, 2021

ASSETS

Cash and Cash Equivalents	\$10,867,536
Accounts Receivable (net)	486,610
Unconditional Promises to Give (net)	264,800
Investments	3,557,096
Beneficial Interest in Assets Held by Madison Community Foundation	1,682,783
Prepaid Expenses	241,942
Property and Equipment (net)	134,170,195
TOTAL ASSETS	\$151,270,962

LIABILITIES

Accounts Payable	300,773
Accrued Liabilities	697,819
Notes Payable	674,593
Unearned Revenue	7,537,349
Due to the City of Madison	21,412
TOTAL LIABILITIES	\$9,231,946

NET ASSETS

Without Donor Restrictions	137,967,381
With Donor Restrictions	4,071,635
TOTAL NET ASSETS	\$142,039,016

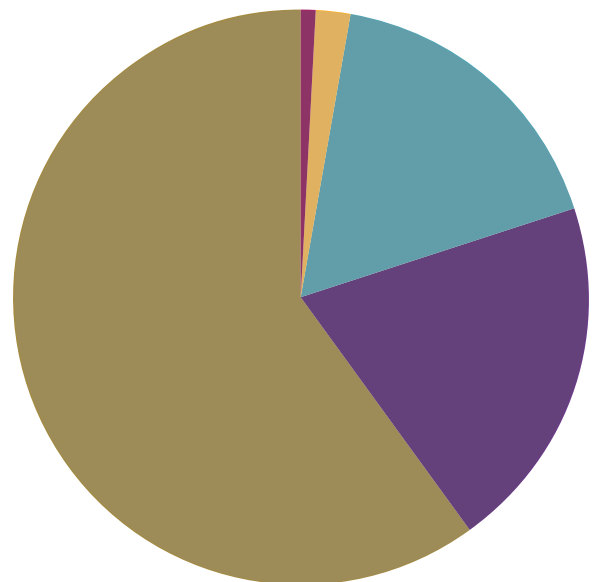
TOTAL

LIABILITIES AND

NET ASSETS	\$151,270,962
-------------------	----------------------

REVENUES BY SOURCE

July 1, 2020 – June 30, 2021



STATEMENT OF ACTIVITIES

For Fiscal Year Ending June 30, 2021

REVENUE AND SUPPORT

Ticket Sales and Fees	\$101,459
Facility Rentals and Services	135,711
Contributions, Grants and Sponsorships	4,914,016
Other Revenue (including PPP loan forgiveness)	1,644,388
City of Madison Support Grant	1,350,000
TOTAL REVENUE AND SUPPORT	\$8,145,574

EXPENSES

Salaries, Wages and Benefits	2,543,338
Artist and Performance Fees	60,210
Advertising	17,292
Purchased Services	552,927
Professional Services	52,178
Ticketing Fees	1,000
Supplies	147,438
Utilities	472,324
Information Technology	321,139
Insurance	149,523
Other Expenses	30,325
Depreciation and Amortization	3,724,108
Interest Expense	21,338
TOTAL EXPENSES	\$8,093,140
Revenues and Support Less Expenses	\$52,434

OTHER REVENUES

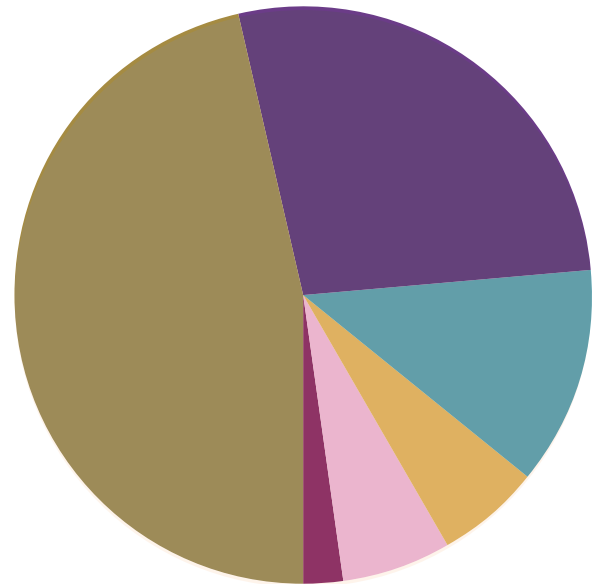
Investment Income	22,214
Endowment Income (net of expenses)	641,060
TOTAL OTHER REVENUES	\$663,274
CHANGE IN NET ASSETS	\$715,708

NET ASSETS BEGINNING OF YEAR \$141,323,308

NET ASSETS END OF YEAR \$142,039,016

EXPENSES BY SOURCE

July 1, 2020 – June 30, 2021



THANK YOU

We gratefully acknowledge the following contributors to Overture Center for the Arts.

Public Support

An annual grant from the City of Madison's Room Tax Fund helps support Overture Center. We thank Mayor Satya Rhodes-Conway, the Madison Common Council and the Room Tax Commission for their generous support.

Local Legends & Corporate Champions

The Local Legends & Corporate Champions programs honor individuals and organizations who lead by example in their support of the arts and community engagement. We want to acknowledge those who wish to create a legacy through a transformative gift of \$100,000 or more to Overture and our community.

2021-22

Deirdre Garton
J.H. Findorff & Son Inc.

2019-20

Dianne Christensen
Bell Laboratories

2018-19

Norman Berven & Barbara
Mittelstaedt Berven
Vance & Jody Tang
Ho-Chunk Gaming Madison

2017-18

Connor Hughes Family
Betty Harris Custer & Custer
Financial Services
Charles & Barbara Saeman
Jack & Sarah Salzwedel
Vance & Jody Tang
Old National Bank

2016-17

Jun & Sandy Lee
Nick & Judy Topitzes

An anonymous couple in honor of Glenda Noel-Ney and Tim Sauers, VP of Programming and Community Engagement, for their dedication to the arts throughout their careers, and their tremendous influence on making Overture this wonderful place to be introduced to, experience and enjoy the arts

An anonymous couple because they believe Overture is a beautiful space that everyone should be able to enjoy

Exact Sciences Corporation

2015-16

Jim & Sue Bakke
Diane Endres Ballweg
Jim Imhoff & Kitty Kuhl
Jonathan & Susan Lipp
Tom & Peggy Pyle

2014-15

An anonymous donor in honor of Ted & Gail DeDee
Ron & Deborah Krantz

2013-14

Bea & Lau Christensen
Joe & Mary Ellyn Sensenbrenner

2012-13

Dianne Christensen
Kelly Family Foundation
Madison Gas & Electric Foundation

Corporate & Foundation Supporters*

Historic Sponsor

American Girl's Fund for Children
Madison Gas & Electric Foundation

\$100,000+

Madison Community Foundation
Marriott Daughters Foundation
State of Wisconsin – Department of Administration

\$20,000- \$99,999

Associated Bank
Bell Laboratories
Custer Financial Services
Evjue Foundation
Ho-Chunk Gaming Madison
J. Willard & Alice S. Marriott Charitable Fund
Old National Bank
SupraNet Communications, Inc.
The Walt Disney Company

\$10,000-\$19,999

American Girl's Fund for Children
Arts Midwest
County of Dane
CUNA Mutual Group
Exact Sciences Corporation
John J. Frautschi Family Foundation
Kuehn Family Foundation
Madison-Kipp Corporation
Nancy Peery Marriott Foundation
Rogers Behavioral Health
Tito's Handmade Vodka
UnityPoint Health - Meriter
Wisconsin Arts Board with funds from the State of Wisconsin and NEA

\$5,000-\$9,999

Dane Arts
Electronic Theater Controls, Inc.
Park Bank
Starion Bank
University Research Park

\$2,500 - \$4,999

Adesys
Kayser Automotive Group
Veridian Homes



\$1,000-\$2,499

Herb Kohl Philanthropies
Nelnet
The Madison Club
Think Ink & Design

Individual Gifts*

\$100,000+

Diane Endres Ballweg
W. Jerome Frautschi Foundation
Pleasant T. Rowland

\$25,000 - \$49,999

Cummings Christensen Family
Foundation
Mike & Lee Ann Dillis
Roma E. Lenehan
Charles & Barbara Saeman
Sarah & Jack Salzwedel
Joe & Mary Ellyn Sensenbrenner
John & Mary Schroeder
Mike & Mary Sue Shannon
Jessica & James Yehle

\$10,000 - \$24,999

Anonymous (3)
Anna & Andy Burish
Anne & Tim Connor
Betty Harris Custer & J. Corkey
Custer
Marjorie Devereaux & David Hall
Eric & Joann Eisenhart
Betty & Jerry Fuller
Linda & John Hughes
Joyce Knutson
Scott & Mary Kolar
Ron & Deborah Krantz
Jun & Sandy Lee
Richard & Mary Lynch
Julie Marriott & David Harding
Jim Matras
Thomas & Margaret Pyle

\$5,000 - \$9,999

Anonymous (2)
In Memory of Michael Aulik-Beere,
Mark Aulik-Beere
Juliet Aylward
Nancy E. Barklage & Teresa J. Welch
Dean & Nancy Baumgardner
Norm Berven & Barbara Mittelstaedt
Berven
Ellen L. Brothers
Dennis & Lynn Christensen
Kevin & Sheila Conroy
Steve & Shirley Crocker
Katie Dowling-Marcus & Ben Marcus
Cedric Ellis
Dan & Natalie Erdman
Curt & Dawn Hastings
Steve & Elaine Hathaway
Dr. Matthew Hebert & Mrs. Sherri
Hebert
Peggy Lindberg
Norma & Doug Madsen
Jean & Walter Meanwell
Tim & Joy Neuville
Dale & Deborah Nickels
John & Susan Pecotte
Reynold V. Peterson
J.P. Raymond
David & Brenda Scidmore
Jeanne and Joe Silverberg
Patty Spires-Merkel & Robert Merkel
Richard & Marcia Taugher
Thomas E. Terry
Greg & Jenny Williams
Janet Zimmerman

\$2,500 - \$4,999

Anonymous (2)
Tom & Martha Beach
David Coe
Greg & MaryAnn Dombrowski
Charles N. Ford & Sharon L. James
Michael & Susan Fox
Dr. & Mrs. Frank Greer
Paul & Ana Hooker

Stanley & Shirley Inhorn
Stuart Levitan
Madigan Family
J & D Masaki
Gary & Lynn Mecklenburg
Sharifa Merchant
Joe & LuAnn Meyers
Shelley M. Moffatt
Maxine & Dennis Palmer
The Pollock Family in memory of C.
Fred Pollock
Tim & Ann Salutz
Jayne Squirrell & Gary Lyons
Tim & Lori Stadelman
Paul Stein
Jane Taves
William Arthur Zorr

\$1,500 - \$2,499

Anonymous (2)
Kristine & Paul Ashe
George Austin & Martha
Vukelich-Austin
Jeff & Angela Bartell
Tom & Sally Basting
Juli & Keith Baumgartner
Mark Bennett
Dianne Benson & Kristin Koeffler
Linda & Niles Berman
Chris Biller
Dale & Nanci Bjorling
Diane Bless
Megan & Christopher Brakebush
Judy & Mark Bunge
Stephen Caldwell & Judi Werner
Arthur Chang
Scott & Jacqueline Cooper
Kristine & Mark Corey
Mrs. Sherry L. de Alvarez
Pamela Walgren & Dan Dooge
Jessica & Jim Doyle
Edmond & Debra Drewsen
Royle Eenigenburg & Jantina Vonk
Russ & Jean Endres
Dennis Funk & Tom Sanew
Jim Sweet & Cate Furay
Saul C. & Melody K. Glazer
Robin Sweet & John Grande
Emily Gruenewald
Wayne Harris
Susi Haviland

Kirsten Held
Wm. Pharis & Carolyn D. Horton
John Delamater & Janet Hyde
Jim Imhoff & Kitty Kuhl
The Kelly Family
Charles & Valerie Kime
Drs. Debra & Fred Kirchner
Larry M. Kneeland
Weed Man/ Terry & Kathy
Kurth
David & Ann Larson
Colleen McCabe
Daniel & Mari Mc Carty
Barbara McGlynn
Laura Meffert
Tom & Ann Merfeld
Nicholas & Elaine Mischler
Mark & Nancy Moore
David S. Morel
Barbie & Terry Murawski
Linda Baldwin O'Hern & Vince
O'Hern
Alicia Ohnstad
William & Patricia Jo Paul
Laura Peck & Gregory Anderson
Frank & Laurie Peregrine
Evan & Jane Pizer
Beata & Matt Pogodzinski
Sara E. Rem
Pablo Sanchez
Sarah Schaettle, MD
Larry & Doris Schauff
Peter & Martha Schram
Joe & Mary Ellyn Sensenbrenner
Mike & Cheryl Shult
Ronald & Christine Sorkness
James & Judith St. Vincent
Robert & Marsha Steffen
Susan Stites
Mark Traino
Brian & Jennifer Van Wyk
Jane & Michael Voichick
Peter & Alice Waldron
Jim & Linda Welch
Daniel & Irene Zimmerman
Jane (Ginger) Zimmerman
Jennifer Zorr

\$1,000 - \$1,499

Anonoymous (4)
Danny Andersen
Mary Jo Bernhardt
Mary Binkley
Roger, Pat & Jamie Birkett
Marcia Blumer
Bryan & Mary Brosamle
Mary & Ken Buroker

Michael Caliva & Marcy Seiler
Diane Kostecke & Nancy Ciezki
Robert & Carol Cushing
Dr. Mark De Clute
Dixon Family Charitable Trust
Shad Fanta & Nina Kinnunen
Dr. Frederick G. Freitag
Robertta Gassman & Lester Pines
Nicholas Ginsberg
Betty & Edward Hasselkus
Thomas & Mary Beth Haunty
Bonnie Hendricksen & Duane
Hendrickson
Kimberly Hughes
Charles James
Tom Jemiola, Jr.
Mr. & Mrs. Steven Johnston
Robert & Maryanne Julian
Rita & Martin Kades
Birke Knipping
Arthur E. & Robin S. Kurtz
Richard & Judy Kvalheim
Donald & Jean Kwapil
Joshua Lang
Timothy Lardinois
Barbara Lazewski
Gerald Lefert
Peter & Jill Lundberg
Ronald Luskin & M. Therese Ruzicka
Brian & Rebecca Mayhew
Steve & Susan McCarthy
McGann Construction
Neal & Cathy Miller
Tom & Carol O'Connell
Frank & Patricia Parker
Rev. Tony & Dr. Katherine Patterson
Paul Roehr
Jim & Carol Ruhly
Bill Scheuerell & Ginny Janssen
Konya & Matt Schuh
Howard & Ellen Louise Schwartz
Michelle Slawny
Mr. Mark Swandby
Michelle Kamin
Judith Taylor
John & Carol Toussaint
Rita Tubbs
Brian & Angelica Vetrovec
Chris Vogel
Wendy Weiler
Shela Westrate
William F. White
Neil F. Wienke
Roger & Janet Zimmerman

\$500 - \$999

Anonymous
Eric Adelman
John & Donna Andres
Charles & Margaret Angevine
Colin & Melissa Anglin
Julia Arata-Fratta
Maneesh & Michelle Arora
Mark & Dawn Ashley
Alex Averbook & Samantha Daniels-
Kolin
Jenny Badreddine
J Ballard & J Matzner
Charles & Elizabeth Barnhill
Nina & Thomas Bartell
Nancy Bauer
Paul Berge & Patricia Sweeney
Robert & Kathie Besteman
The Blake Family
Roger & Linda Boettcher
Robert Bolles
M. Lynn Bonneau
John & Jan Bonsett-Veal
John Borleske
Therese Borneman
Cathy & Steven Brodbeck
Paul and Clio Bushland
Carolyn Lazar Butler & Brian Butler
Russell Cannon
Randy Carey
Eric Carlson
Benjamin Carter
Jeff & Robin Cherwinka
Kevin & Connie Chesnik
Victoria Cheung
Thomas Clark
Caroline A. Cole
Kenneth Connor
Virginia Corwin
Tony D'Alessandro & Alison
TenBruggencate
Susan & Richard Davidson
R. Chris & Kathy Davis
Erin Decker
Kurt Riegel & Jocelyn DeWitt
Gib & Gail Docken
Peter Doksus
Renae Schroeder & Todd Donkle
Robin Douthitt
Eve Drury & Peter Beatty
Lindsey Duca
Rabbi Irvin & Vivian Ehrlich
Judith & Richard Ela
Mark Etzel
Robert Fahrenbach

David Falk & JoAnne Robbins
Jonathan & Tracy Filter
Flora & Douglas Flygt
Ingrid & Dick Foley
Lynette Fons & Bernard White
Robert Forbess & Eunice Reep
Cheryl Frazier
Bonita Sue Friedrich
Sara Record Frings & Gary Frings
John Fritsch & John Cannon
John Frohna & Dawn Cottingham
Susan Fulks
Kay Gabriel & Fiona McTavish
Kimberly & William Giesecke
Lynn Gilbertson-Burke
David & Jean Glick
John & Stacy Graham
Leona Grubb
Ellen Wuennenberg
Terry Haller
James Halverson
Mark & Debbie Hamilton
Beverly Harris
Patrick & Janet Hennessey
Marilyn Hoffman
Jennifer Hoffman
Robert W. Hoffman
Rhonda & Carl Holmquist
Chris Homburg
John Humenik
Lisa Humenik
Alex Hutton
Lora Hynek
Jay Isaacson
Sandy & Glen Jaeckel
Norman Jenkins
Norman & Nancy Jensen
Alan Jentz
Caitlyn Johnson
Dr. Jonathan Johnson MD
Maryl R. Johnson, MD
Stanley Kanter
David Kassa
Sandra Kaul
Daniel & Sheree Kehoe
Kathleen M. Kelm
Randall Kimple
Michael Kohlman
Steve & Lorene Kowalsky
Kristine Krigsvold
James & Jill Krogstad
Beth Kubly
Thomas Kurtz
Michael & Megan Kushner
David Lahaye

Nick Lane
Donald Lang
Mrs. Amanda J. Larson
Robert Lewin
Kurt Lin & Diane Reeber Lin
Maija Maki-Laurila
Bradley & Susan Manning
Helen & Jeff Mattox
Dr. Patrick & Linda Mckenna
Cary & Brenda McNatt
Chris & Kelly Medenwaldt
Mike & Sally Miley
Steve N. Miller & Margaret J. Miller
Kay Millonzi
Kyle Miner
Mike Modl & Peg Littlefield-Modl
Jennifer & Daniel Moehn
Ann & David Moffat
Kate Morand
Stephen Morton
Lee Nadolny
Stephen Nickels
Marv Nonn
Douglas & Betsy Nordstrom
Leonard Nosal & Gretchen Macht
Renee & Andy Olson
Ron & Janice Opelt
Nancy & Doug Palm
Jennifer Parker
Zorba & Penny Paster
Beauregard W. Patterson Esq
Dick & Sandy Pfahler
Andrew & Pam Policano
Mike Potter
Steve & Jeanne Preston
Geoffrey & Christine Priest
Carolyn & Peter Rank
Tom & Jo Ann Reed
David & Annette Ringdahl
Connie & Bob Roden
James & Jane Roeber
Drs. Carol Diamond & Howard
Rowley
Tina & Joseph Ruskey
Charles & Barbara Saeman
Albert & Ruth Schams
Thomas & Judy Scheidegger
Dr. Margaret Schwarze
Richard & Christine Schwarze
Linda K. Scott
Jay & Katie Sekelsky
Lynda Sharpe
Ana Silva
Mark Simmons
Susan Skinner

Pam Smestad
Greg & Bobbi Smith
Sharon Smith
Thomas Smith & Jennifer Younger
Amanda Soelle
Michael Cain & Anita Sprenger
Tom Steppe & Ann Meyer
Joe & Phyllis Stertz
Sue & David Stone
John Stott
John Surdyk
Peter & Ruth Taylor
Heather Tiller
Gregg & Janice Tipple
Deanne Traxler
Ellen Twing
Fred Urben
Stephen Vander Sluis
Steven & Kristine Vaughn
Michael Verveer
Steve & Betsy Wallman
Wedding Family
Chad Weick & Greg Chesmore
Debra Weitzel
David L. White
Marybeth Wilk & Katherine Brophy
Kathryn Wilson
Kenneth & Lynn Winter
Ms. Judy K. Ziewacz
Mary Zins

\$250 - \$499

Anonymous (11)
Rick Abegglen
Chris & Ellen Acker
Cecile A. Aday
Michael Anger
Barbara J. Arnold
David A. Babler
Rachael Bailine
Donald & Christina Barley
Paul & Susan Barrett
Paul Barth
Thomas F. Baxter
Christine Beatty & Fred Kauffeld
Lawrence Bechler
William F. Bedker & Jennifer Wnuk
Sellers Bell
Susan Benjamin
Ms. Jane O. Bennett
Kelly & Darren Berg
Mr. William Bethke
Glen Bever
Anna Biermeier & Roger Hanson
Lisa Binkley
Dr. James H. Black

Tom & Paula Blankenheim
Terry Bloom
Sandra Bloomfield
Randall Blumenstein & Marci
Gittleman
Gloria Borchert
Freya & Jeff Bowen
John Braden
Patricia Brady & Robert Smith
Dr. Valeri J. Briski
Bill & Lynne Buckingham
Amy & Cenon Buencamino
Peggy & Christopher Bugg
Mr. Larry Bullen
Charles & Joanne Bunge
Kelly Busch
Katie & Tom Bush
Debra Byars
Melinda Caldwell
Linda Carpenter
Mrs. Stephanie S. Carpenter
Doc & Karen Casey
Connie Chapman
Amy & Andrew Cigan
Sara Cochrane
Marshall & Arlene Colburn
Mark & Ellen Cook
Ms. Christine Cox
Tim Culver
Lisa Cvenngros & Nancy Nichols
Al Dassow
William Davis
David & Diane Deci
Maria Del Rio Shelzi & Michelle
Schry
Shelley Denure & Mark Ristey
Paul D. DiMusto
David Dohler
Alison Dorner
Vicki Drenning
Susanne & Randall Dunham
Diana Durant
Chris Eckerman
Shelby Ellison
Mary Elvekrog
Tim & Vikki Enright
Rod & Ruth Erickson
Joe & Lori Ernst
Rita M. Esch
Dan & Deb Esposito
Linda Fariss
Ms. Patricia A. Fenner
Amy Flesch & Sean Bium
Carol Flint
Ariel Ford

Pixi & Bob Foulks
Eric Frailing
Shari & Gregory Gasper
Tim Geier
Rick Genin
Heather Gerhart
Thomas & Joanne Gobel
Mary T. Grace
Robert Grigg
Kirsten Grinde
Randall Grobe & Pamela Murphy
Brian Groskopf
Nancy & Peter Gunder
Elena Gutierrez
Paul Hagen
Richard Hagensick
Shawn Hall
Judy Ham
Robert Haman
Beth Hamelink
Mrs. Christine Hampton
Susan Hansen
Linda Hanson
David Hassemer & Sandra Guthrie
Cindy & Don Hertrampf
Ellen & Kevin Hess
Ed Holmes
Barbara Hundt
Anna Hutchison
Jeff & Linda Huttenburg
Benny & Jenny Iskandar
Ralph & Marie Jackson
Sondra Jackson
Dr. Paul & Lynne Jacobsen
Monica Jaehnig
Steven Jellinek
Vince Jenkins & Stefanie Moritz
Darin Johnson
Marilyn Johnson
Lee & Rosemary Jones
Sam Josvai
Sarah Karlen
Jerry & Nancy Kaufman
Cheryl L. Kendrick
Mike Kenig
Kim & Lawrence Kieck
Daniel King
Rochelle Klaskin
Larry & Mary Kleinsteiber
Laura Kline
Robert & Gloria Knipschild
Michael Knoedler & Kathleen
Warpinski
Doug Knudson
Lori Koffarnus

Ms. Jane L. Kopp
Ken & Elaine Kosier
Catherine Krier
Megan Krueger
Sylvia & Lawrence Kruger
Dan Kruse
Michael & Sharon Kuhn
Michael & Debra Kutchin
Joanne Kutter
Keith Lang & Mary Ellen Havel-Lang
Ms. Courtney Lanz
Beverly Larson
Roger Lautz
Charles Leadholm & Jeanne Parus
Robert & Jeffrie Leahy
Craig & Kathleen Levenick
Victor & Judy Levine
Thomas & Margie Lindow
Marsha Lindsay
Richard Linton
Efrat Livny & Ken Baun
Barbara Loftsgordon
Dale Loomis
Anne Lucke
Mary Manering & Dennis Tande
Bruce & Ruth Marion
Delia Markham
Charles Martin & Kathryn Schubert
Kimberly Mast
Chelsea R. McCord
Jennifer McCreadie
Marcia & Mark McDermid
James McNeil
Angela Mehrman
Steven Meyers
Irene Middlemas
Ms. Rosalie Migas
Paul & Sherry Minkus
Richard & JoAnn Morgan
Tess Mulrooney & Paul Eastwood
Matthew K. Nelson
Kathie J. Nichols
Tracy Niesen Breunig
Ms. Heather Norton
Daniel O'Brien
Mary O'Connor
Mrs. Samantha O'Connor
David Olson
Kathleen Olson
Scott Paler
Amy Pauli
Therese & Mark Payne
Jon Pernsteiner
Lori Pernsteiner
Robert Pesselman & Gerri DiMaggio-
Pesselman

Jeffery & Megan Pierce
 Amy Plumb
 Karen Pollack
 Ken & Sharon Poniewaz
 Linda & Paul Post
 Terence & Jean Prah
 Barbara Prindiville
 Thomas & Linda Redding
 Heather Reeder
 Gary & Linda Rehfeldt
 Catherine Richard
 Georgia & Scott Roeming
 Pamela Rolfs
 Richard Roper
 Elaine R. Rosenblatt
 Judy Saeman
 Salar Saleh
 Renee Moe Salus & Jason Salus
 Mark Samuelson
 Wilton Sanders & Ms. Sue Milch
 Taemie & Michael Saucerman
 Jeffrey & Gail Schauer
 Peter Schierloh
 Dale & Madeline Schoeller
 David & JoAnn Schoengold
 Jean Schomisch & John Luehrsen
 Theresa Schuster
 Wayne Schwalen & Barbara Fleeman
 Robert & Patricia Schwan
 Kate Sebastian
 Robert C. Seitz
 Monica Sentoff
 Sean Severson
 Claire Shaffer & Monica Gall
 Linda Shaw
 Sonjia Short
 Maureen Skelton
 Reeves Smith & Glenna Carter
 Ed & Jennifer Snow
 Mark & Lois Solverud
 Ross & Megan Squires
 Michael Statz
 Phillip Stefonik
 Jerry Steinhauer
 Kathy Stewart
 Elaine B. Strassburg
 Roger L. Stuve
 James Sugden, III
 Dan & Barb Takkunen
 Girma Tefera & Rahel Desalegne
 Rebecca Thousand & Eric Anderson
 Beth & David Timm
 Daniel Treuter
 Lynn & Vern Tucker
 Ward & Elizabeth Tucker



JULIE MARIOTT

*2020/21 Development Committee Chair
Overture Center Foundation*

This past year your financial support has been a lifeline for Overture Center. Without the ability to hold in-person performances for over a year, our revenues dropped by nearly 90%. The pandemic created an environment where every decision was difficult and there were no “best practices.”

Because of you, Overture was resilient. We invested in our building to support a safe return of the arts and strengthened collaborative relationships with our donors, patrons and arts partners throughout the community.

As this fiscal year closes, we are grateful to each one of you who supported Overture as we worked to overcome today’s challenges and remain hopeful for the future. The pandemic is not yet behind us, but we will forge ahead, bringing the lessons learned and relationships formed during our closure as we build a bright future.

Thank you for standing with Overture during this trying time and for believing that the arts are not a luxury, but a necessity. The arts are critical to our community’s creative culture, economy and quality of life. Your support ensures that extraordinary experiences in the arts are available to all.

Deborah Mae Umstead
 Elizabeth Urban
 Theresa Ursin
 Marjorie Van Handel
 Constance Von Der Heide
 Lainie Wade
 Georgia & Burt Wagner
 Arnold & Ellen Wald
 Peter & Toby Wallach
 Kevin & Theresa Walske
 Anglinia Washington
 Ms. Elizabeth J. Watson
 Kent Wedemeyer
 Steve & Pat Wehrley
 Vicky Weier
 Cindy & Jeff Welch
 Mrs. Kelly Welsh

Alan R. West
 Jacquelyn Whisenant
 Carl White
 Phyllis Wiederhoeft
 Mrs. Juliette C. Williams
 Siobhan Wilson
 Mark Wisinski
 Timothy Wolff
 Amy Wolfgram
 Jeffrey Wright & Jatinder Cheema
 Susan & Rolf Wulfsberg
 MW Wurl & Julie Thies
 Jim & Susan Zerwick
 Dave & Sandy Zweifel
 Douglas & Karen Zweizig

**Gifts received July 1, 2020 – June 30, 2021*

LOCAL LEGEND

Local Legends are local couples or individuals who've pledged \$100,000 to challenge area residents and businesses to support the arts at Overture Center for the 2020/21 season.



DEIRDRE GARTON

"The reason I continue to go to exhibitions and arts performances at Overture Center is because I want to experience the feelings of wonder and awe, over and over again," said Deirdre Garton. "I've been very blessed in my life, and my family history is one of sharing, so I decided to give this gift to Overture to help make it possible for everybody to have arts experiences like I've had."

CORPORATE CHAMPION

Corporate Champions contribute \$100,000 to bring extraordinary performances to Madison, to increase access to the arts through free and low-cost programs, to support the arts in area schools and to champion new program development to meet the emerging needs of the community.



J.H. FINDORFF & SON INC.

"Many of us at Findorff look at Overture with a legacy lens," said Findorff President and CEO Jim Yehle. "As a long-time partner of the organization, Findorff has provided the expert craftsmanship necessary, supporting the arts and Overture's overall mission. We know our continued partnership will help to ensure Overture Center for the arts remains the vibrant space that Findorff constructed years ago."

THE ANDERSON LEGACY CIRCLE

The Anderson Legacy Circle recognizes and celebrates generous supporters who are leaving a gift to Overture through their will, retirement plan or other giving arrangement.

Anonymous (2)
Thomas J. Basting Sr. & Sally C. Basting
Richard Christofferson
David Coe
Betty Harris Custer
Mike and Lee Ann Dillis
Dan Dooge and Pam Walgren
Robert N. Doornek
Rabbi Irvin and Vivian Ehrlich
Robert E. Forbess
Roberta Gassman and Lester Pines

Larry Kneeland
Joyce Knutson
Jim Matras
Tim and Joy Neuville
Reynold V. Peterson
Bill Scheuerell & Ginny Janssen
Joe Silverberg and the Estate of
Jeanne Silverberg
Ron and Christine Sorkness
Paul and Joyce Stein
Estate of Anne N. Stoelting

Vance and Jody Tang
Jane Taves
Roger and Kristi Williams
Estate of Dr. Margaret Winston
Kathleen E. Woit, Ph.D.
William (Bill) Zorr

Generously sponsored by:



vonBriesen
von Briesen & Roper, s.c. | Attorneys at Law



OVERTURE CENTER BOARD OF DIRECTORS

JULIA ARATA-FRATTA*
Treasurer

Senior Accountant, Wegner CPAs

DR. JULIET AYLWARD
UW-Madison Department of
Dermatology

KEITH BAUMGARTNER
Retired CPA

BRYAN CHAN
President, SupraNet Communications

BETTY HARRIS CUSTER*
Past Chair
Founder & Managing Partner,
Custer Financial Services

GREG DOMBROWSKI
President, Johnson Bank

KATIE DOWLING-MARCUS
Visual Artist

LYNETTE FONS
Attorney, JD CCEP

**Indicates Executive
Committee Member Listing*

JOHN GRANDE
Administrator of DFI Division of
Banking, Wisconsin Department of
Financial Institutions

ANA HOOKER*
Secretary
Senior Vice President, Exact Sciences

JONATHAN LIPP
CEO, Full Compass Systems

SABRINA MADISON
Founder & Director, The Progress
Center for Black Women

JULIE MARRIOTT*
Philanthropist

SARAH MARTY*
UW-Madison Arts Institute, Faculty
Associate at WI School of Business

JIM MATRAS
Retired Business Owner

OSCAR MIRELES
Mayoral appointee,
Director, Omega School

EVERETT MITCHELL
Honorable Reverend, Dane County
Circuit Court Judge

FRANK D. PEREGRINE
Founder, Cambridge Winery

GREG PFLUGER
Chief Information Officer, American
Family Insurance

PABLO SANCHEZ*
Chair
Vice President, Park Bank

JOHN SURDYK*
Vice-Chair
Director, Initiative for Studies in
Transformational Entrepreneurship,
UW-Madison

HANAH JON TAYLOR
Mayoral appointee, Musician,
Business Owner

MISSY TRACY
Municipal Relations Coordinator,
Ho-Chunk Gaming Madison

MIKE VERVEER*
Mayoral appointee, Alder,
Madison Common Council

JAMES YEHLE*
President & CEO,
J.H. Findorff and Son Inc.

COMMUNITY ADVISORY COUNCIL

Consuelo Lopez (*Chair*), Sarah Karlen (*Vice Chair*), Jair Alvarez, Jonathan Biatch, Danessa Bishop, Dawn Crim, Cheryl Gittens, Bernie Hoes, April Kigeya, Ron Luskin, Jo Oyama Miller, Ananda Mirilli, Zon Moua, Eugenia Podesta, Hedi Rudd, Anglinia Washington, Karen Weatherwax



Overture
CENTER FOR THE ARTS

201 STATE STREET
MADISON, WI 53703